

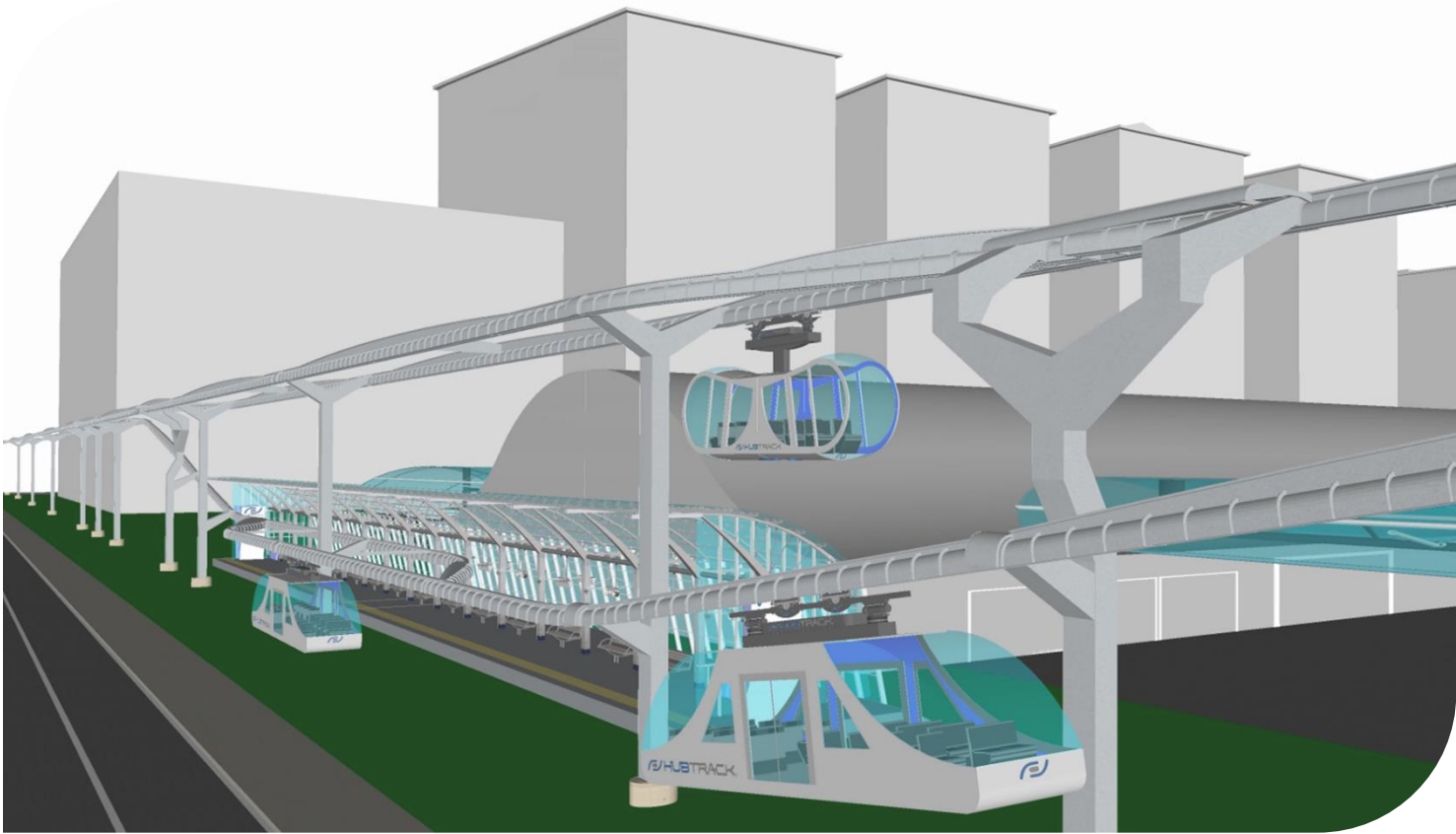


**Production,  
Distribution &  
Transportation  
Solutions.**



**Sustainably  
Connecting  
Everyone,  
Everything,  
Everywhere.**

# HUBTRACK<sup>®</sup> CORP



- + Efficient technology for sustainable and cost-efficient mobility.
- + Compliant to underhung monorail industrial standards to safely transport people and equipment above ground.
- + 3 patented and validated models ready for market.

## HubTrack® A-20



## HubTrack® A-22



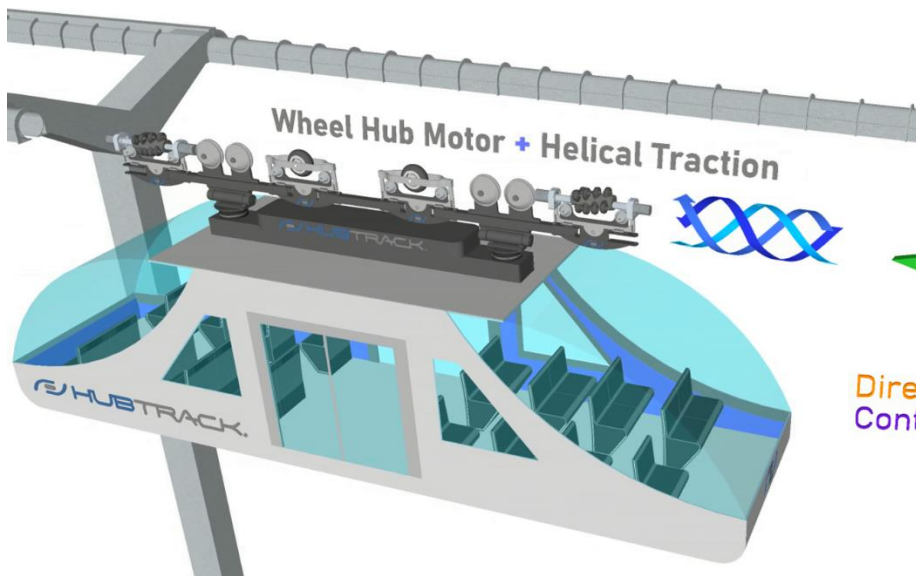
## HubTrack® B-22



## Main links to the HubTrack.com website

- **Products** [hubtrack.com/drive-systems](http://hubtrack.com/drive-systems)
  - + **Advantages** [hubtrack.com/features-advantages-hubtrack](http://hubtrack.com/features-advantages-hubtrack)
  - + **Benefits** [hubtrack.com/benefits-hubtrack](http://hubtrack.com/benefits-hubtrack)
- **Material Handling Applications** [hubtrack.com/market-applications](http://hubtrack.com/market-applications)
- **People Mobility Applications** [hubtrack.com/people-mobility](http://hubtrack.com/people-mobility)

## Efficiency with Helical Traction & Fast Technologies.



- + Powerful.
- + Energy-Efficient.
- + Safe.
- + Cost-Efficient.



## High-Performance Solutions Tailored to Your Mobility Needs.



- + Modular design of vehicles and rails.



- + Multiple configurations for a variety of applications, needs and constraints.



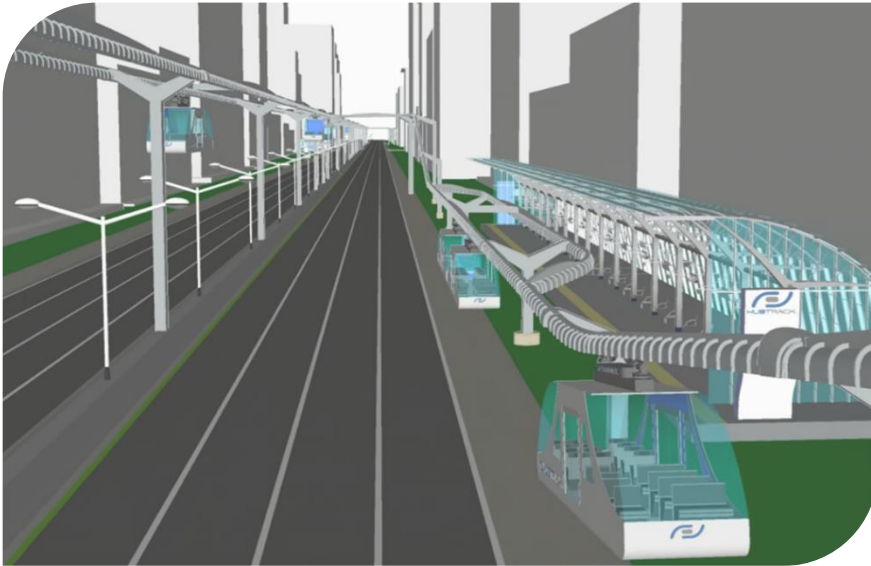
- + Variable and direct logistics flow, protected from outside weather and ground level risks.



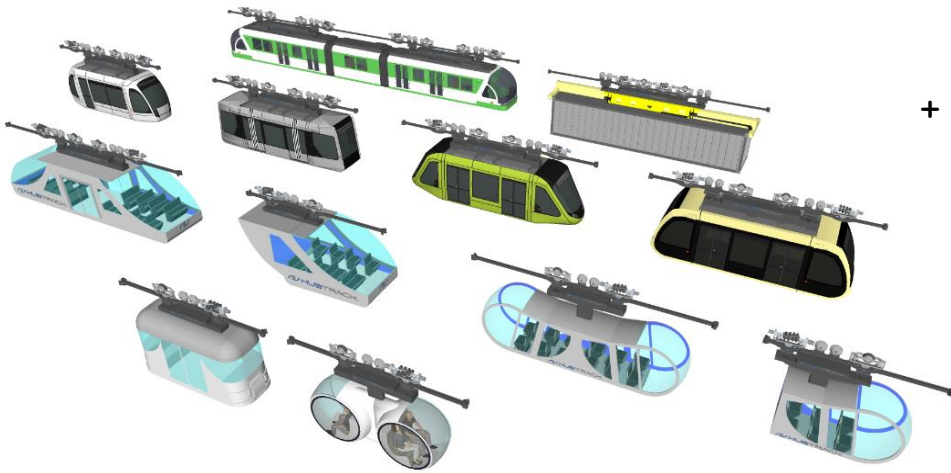
- + Very low operational costs of energy consumption and maintenance.

- + Added value to rolling equipment and capital assets.

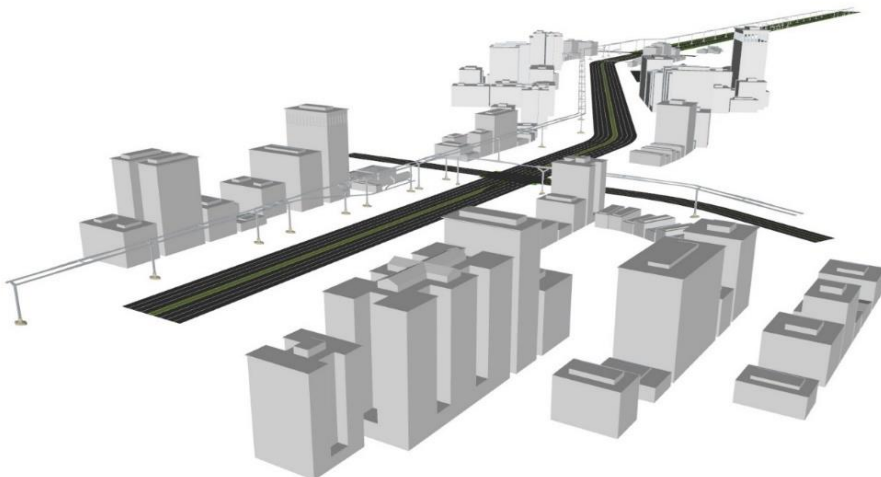
## Comfortable, Fast & Safe People Mobility.



- + Variable and direct flow of travel between origin and destination, protected from all risks.
- + Availability of ride on demand.
- + Direct and frequent access points to pool in various transportation means.



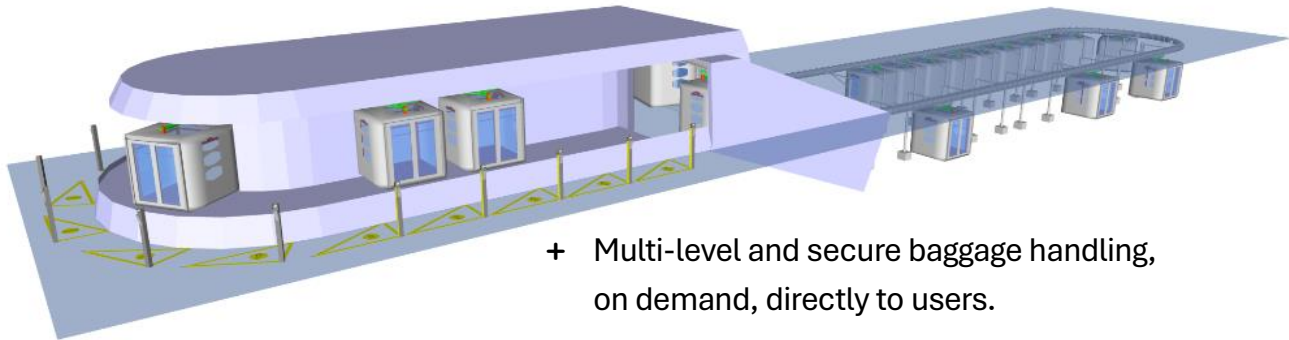
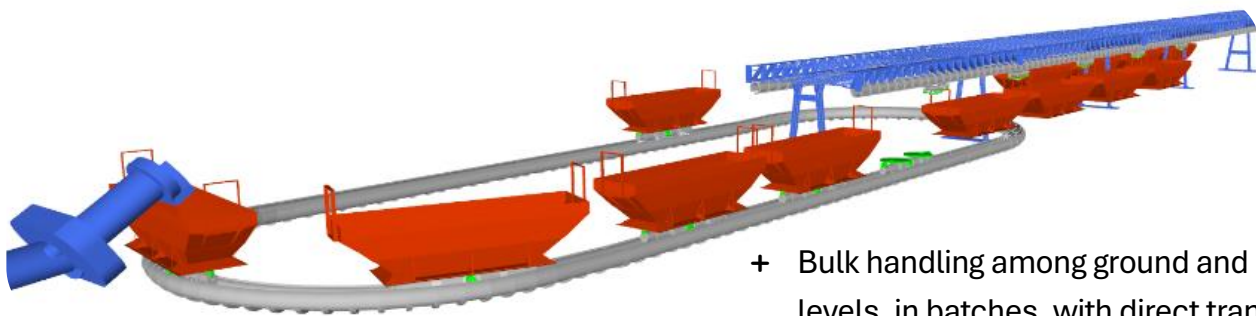
- + Rolling equipment adaptability to vehicle dimensions and user needs.



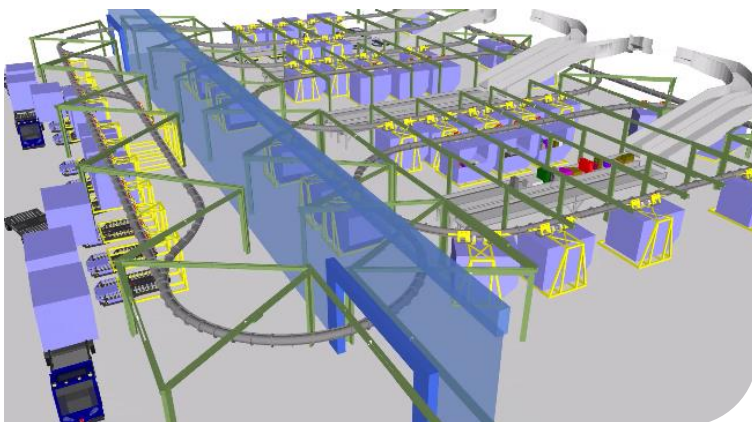
- + Simple and light overland infrastructure.
- + Affordable and rapid network implementation above ground which provide direct ground level access.

## Profitability & Quality of Production & Distribution Services.

+ Optimization of the logistics flow of material handling operations.



+ Integrated handling of transshipping, storage and sorting.



+ Agile overland handling for batch production and distribution.

